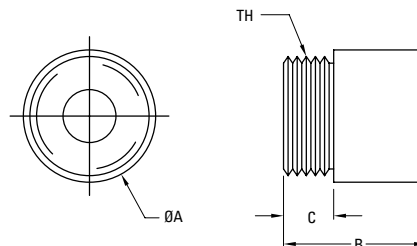


Metric Thread Mount Supernuts®

SB



Our classic Supernut is now available with metric mounting thread. Offered with our metric screw line sizes 10 mm through 24 mm. The nut color is black to easily differentiate it from the SN nut (see p. 26)

SB
(10 to 24 mm) Diameter*

Dia.	Lead	Part No.	Supernut® Dimensions				Design Load lb (N)	Max. Static Load lb (N)	Efficiency %
			A in (mm)	B in (mm)	C in (mm)	TH			
10 mm	2 mm	SB10x2M	0.750 (19.1)	0.750 (19.1)	0.250 (6.5)	M16 x 1.5	70 (310)	350 (1550)	42
	3 mm	SB10x3M							53
	4 mm	SB2-10x2M							59
	5 mm	SB2-10x2.5M							64
	6 mm	SB4-10x1.5M							66
	10 mm	SB5-10x2M							76
	12 mm	SB5-10x2.4M							78
12 mm	20 mm	SB6-10x3.3M	81						
	3 mm	SB12x3M	1.000 (25.4)	1.000 (25.4)	0.375 (9.5)	M22 x 1.5	100 (445)	500 (2225)	48
	4 mm	SB2-12x2M							54
	5 mm	SB2-12x2.5M							59
	6 mm	SB3-12x2M							63
	10 mm	SB4-12x2.5M							73
	15 mm	SB6-12x2.5M							78
25 mm	SB10-12x2.5M	82							
16 mm	4 mm	SB16x4M	1.000 (25.4)	1.000 (25.4)	0.375 (9.5)	M22 x 1.5	160 (710)	800 (3560)	48
	5 mm	SB2-16x2.5M							52
	8 mm	SB4-16x2M							63
	16 mm	SB7-16x2.3M							75
	25 mm	SB5-16x5M							80
20 mm	35 mm	SB7-16x5M	82						
	4 mm	SB20x4M	1.500 (38.1)	1.500 (38.1)	0.500 (12.7)	M35 x 1.5	300 (1335)	1500 (6675)	42
	8 mm	SB2-20x4M							59
	12 mm	SB3-20x4M							67
	16 mm	SB4-20x4M							72
	20 mm	SB5-20x4M							76
	45 mm	SB9-20x5M							82
50 mm	SB10-20x5M	82							
24 mm	5 mm	SB24x5M	1.500 (38.1)	1.500 (38.1)	0.500 (12.7)	M35 x 1.5	300 (1335)	1500 (6675)	42

* For all sizes shown on this page Drag Torque = Free Wheeling